

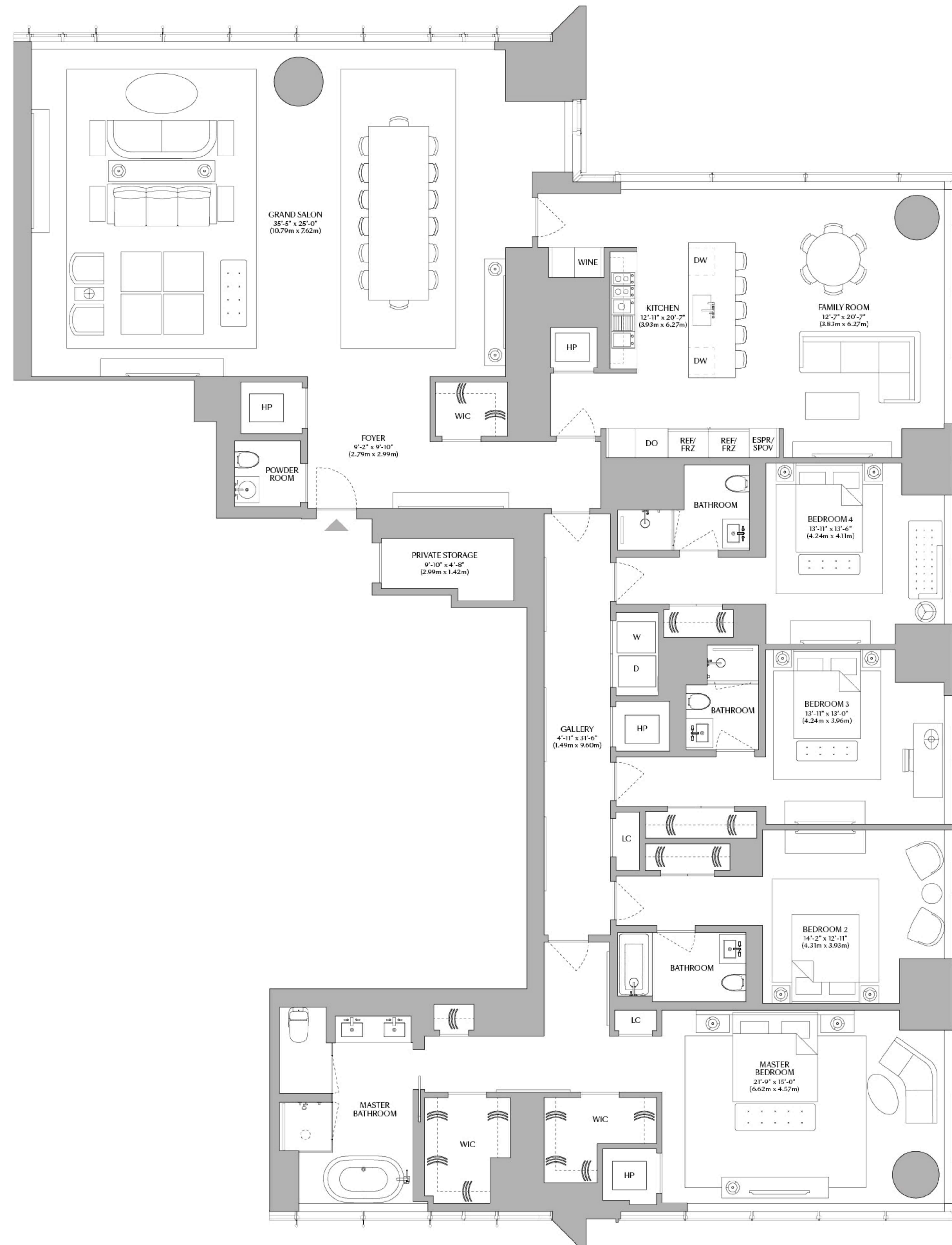
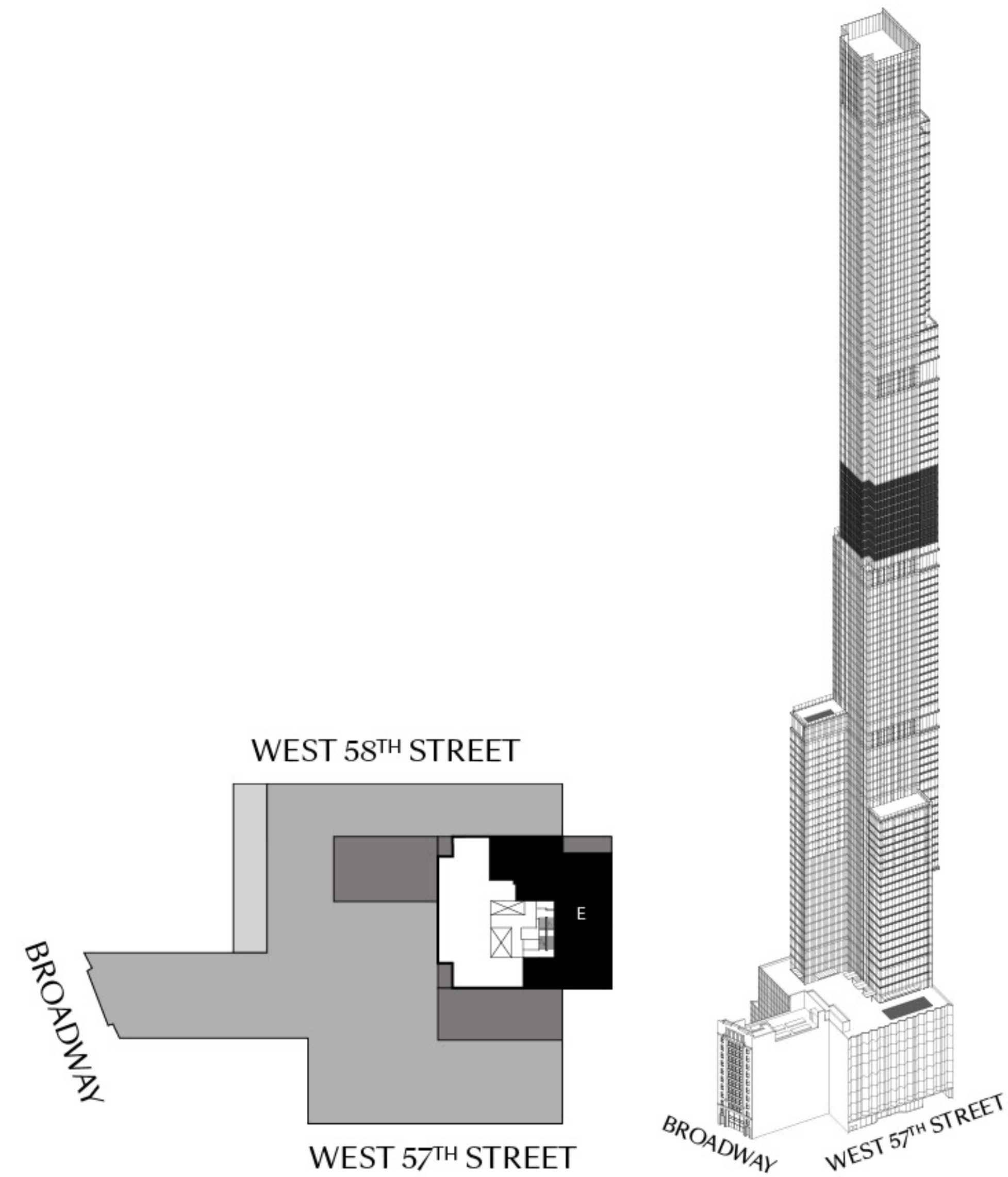


# CENTRAL PARK TOWER

## RESIDENCE E FLOORS 78-86

4 BEDROOMS  
4 BATHROOMS  
POWDER ROOM

4,296 square feet  
399.11 square meters



All dimensions are approximate and subject to normal construction variances and tolerances. Square footage exceeds the usable floor area and includes columns, mechanical pipe shafts, shaftways, chases, conduits and other common elements. Sponsor reserves the right to make changes in accordance with the terms of the offering plan. Plans and dimensions may contain minor variation from floor to floor. The floor patterns depicted hereon are for illustrative purposes only and subject to change. Such floor patterns are not necessarily indicative of what is specified in the offering plan. Units will not be offered furnished. Furniture layouts shown are for concept only and are not coordinated with building systems. No representation or warranty is made that a Unit Owner will be able to implement the furniture layout shown above. The complete offering terms are in an offering plan available from Sponsor File No. CD16-0240. Sponsor: Smitell LLC, 805 Third Avenue, Seventh Floor, New York, NY 10022. Equal Housing Opportunity.

