

ZAHA HADID

520 WEST 28TH

PENTHOUSE 39

LEVEL 21 ELEVATION 122'

ROOF TERRACE ELEVATION 134'

Interior: 4,268 Sq. Ft. / 397 Sq. M.
Exterior: 1,340 Sq. Ft. / 124 Sq. M.

4 Bedrooms
4 Baths
Powder Room

South & North Exposures
Gracious Entry Foyer
South-Facing Great Room with Balcony and Fireplace
Dining/Family Room
Windowed Eat-In Kitchen
Signature Zaha Hadid Sculptural Element with Opalescent-Finish Wall Paneling
Private In-Residence Elevator
1,178-square foot South-facing Roof Terrace
Outdoor Kitchen with Grill, Sink and Refrigerator
Master Bedroom Suite with Large Dressing Room
En-Suite Bathrooms in Bedrooms 2, 3 & 4
Utility Room with Side-by-Side Washer-Dryer and Sink
Dedicated Service Entrance

RELATED

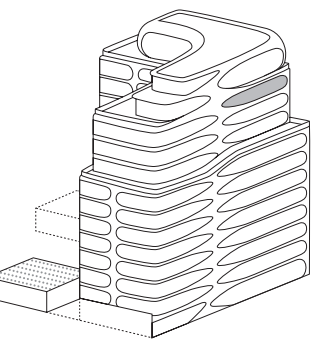
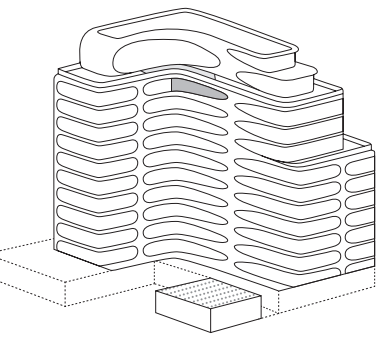
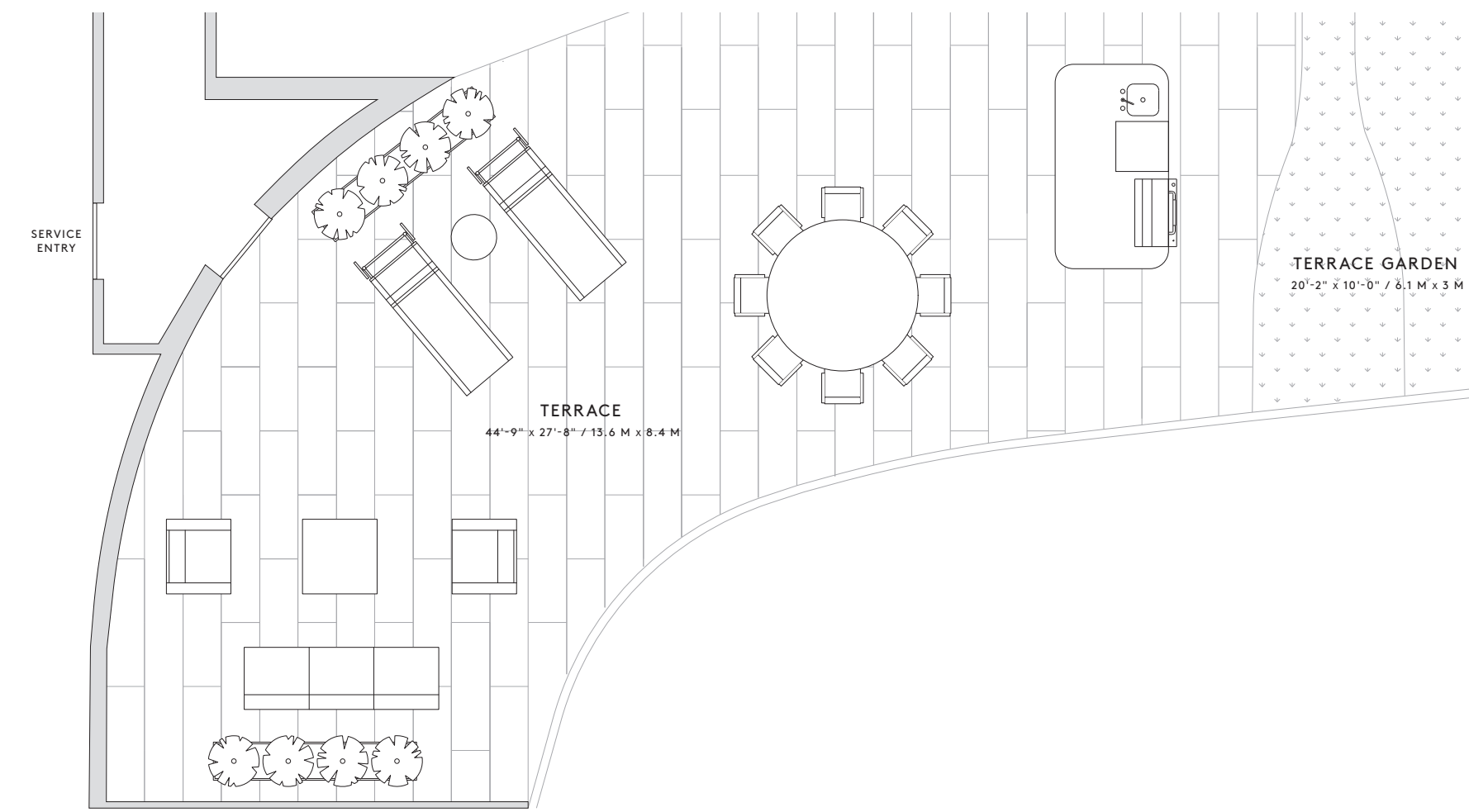
EXCLUSIVE MARKETING
& SALES AGENTS:

Related Sales &
Corcoran Sunshine Marketing Group

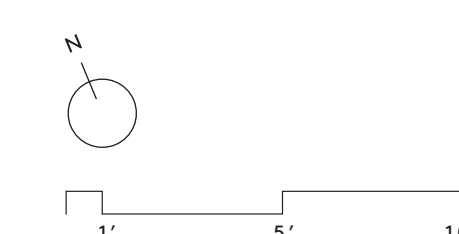
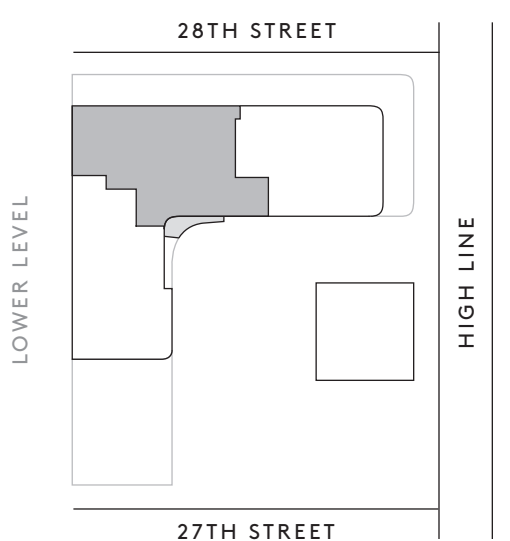
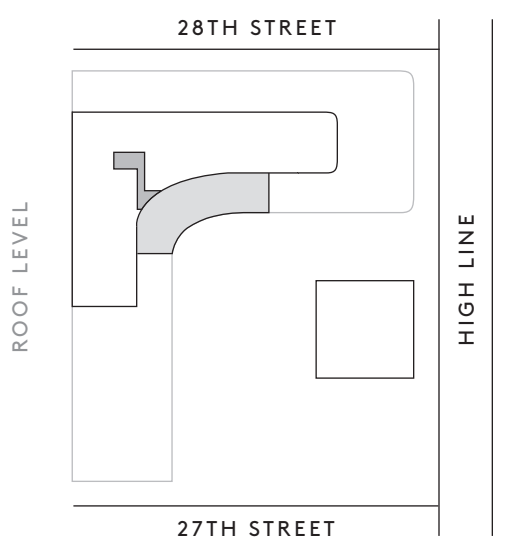
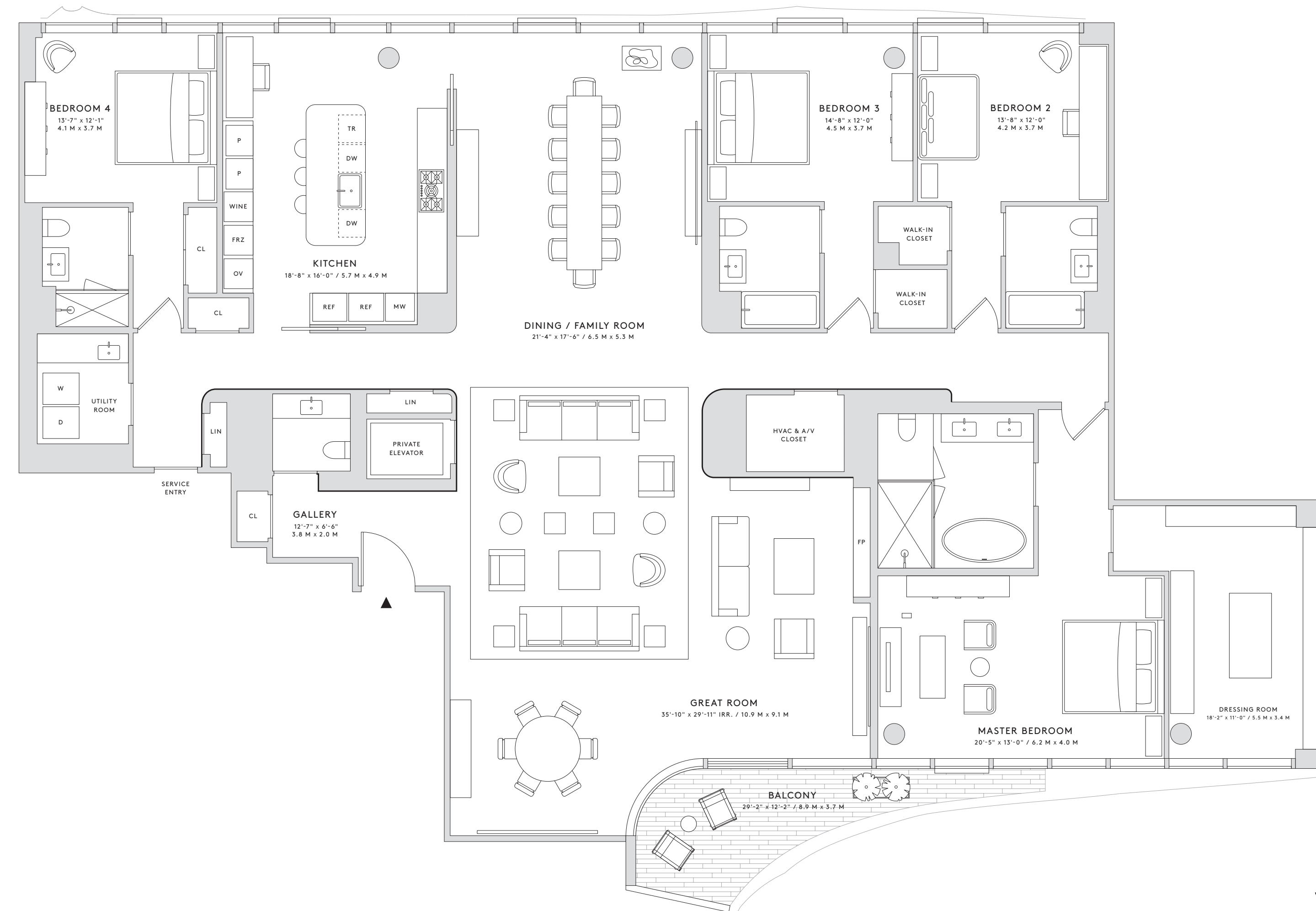
SALES GALLERY

520 West 28th Street
New York, NY 10001
Tel +1 212 502 5528
www.520w28.com

UPPER LEVEL



LOWER LEVEL



All dimensions are approximate and subject to normal construction variances and tolerances. Plans and dimensions may contain minor variations from floor to floor. The square footage on this floor plan exceeds the usable square footage. The complete offering terms are in an Offering Plan available from Sponsor. File No. CD14-0111. Sponsor: 28th Highline Associates, L.L.C., c/o The Related Companies, L.P., 60 Columbus Circle, New York, New York 10023. Property Address: 520 West 28th Street, New York, New York 10001. Sponsor reserves the right to make changes in accordance with the terms of the Offering Plan.