

**South Residence
Half Floor Unit**

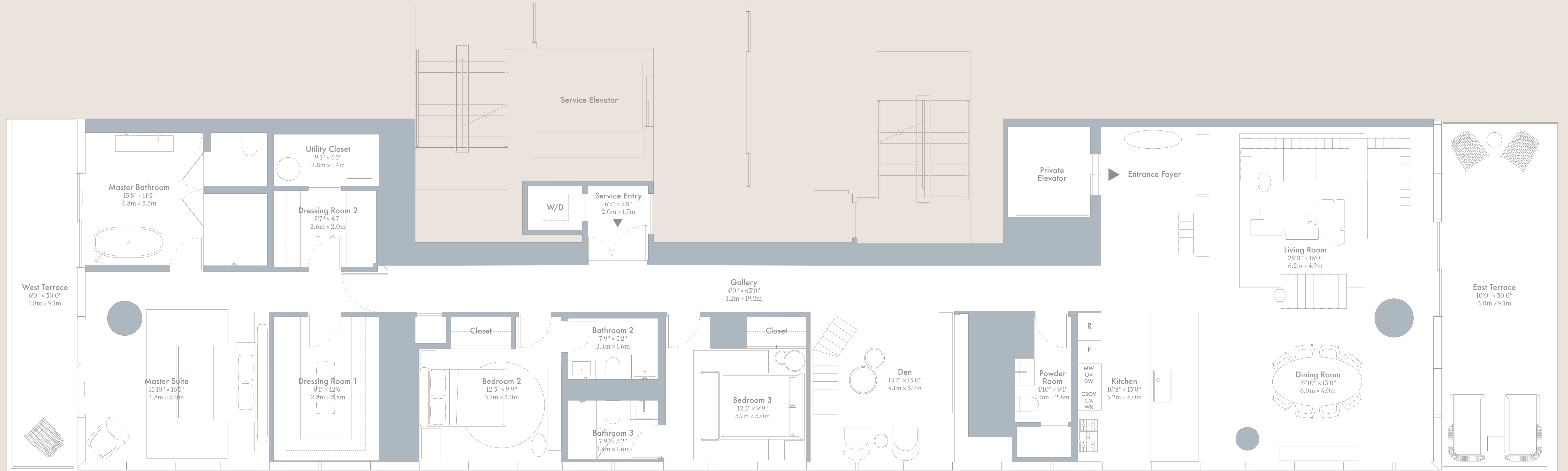
Floors 5 — 33

Interior
2,913 FT² / 270.6 M²

Exterior
475 FT² / 44.1 M²

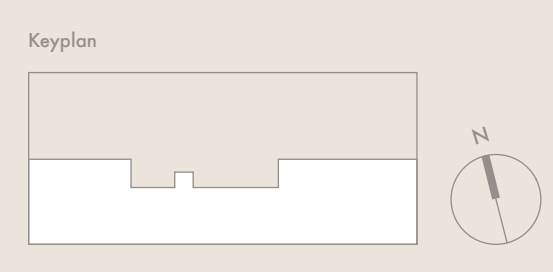
Total
3,388 FT² / 314.75 M²

- Features
- 3 Bedrooms + Den
 - 3 Bathrooms
 - Powder Room
 - East & West Terraces
 - Private Elevator Landing



INTRACOASTAL WATERWAY

ATLANTIC OCEAN



Scale: 1/4 Inch = 1 Foot

ORAL REPRESENTATIONS CANNOT BE RELIED UPON AS CORRECTLY STATING THE REPRESENTATIONS OF THE DEVELOPER. FOR CORRECT REPRESENTATIONS, REFERENCE SHOULD BE MADE TO THE DOCUMENTS REQUIRED BY SECTION 718.503, FLORIDA STATUTES, TO BE FURNISHED BY A DEVELOPER TO A BUYER OR LESSEE.

This offering is made only by the Prospectus for the Condominium and no statement should be relied upon if not made in the Prospectus. This is not intended to be an offer to sell nor a solicitation of offers to buy in any jurisdiction where prohibited by law, and your eligibility for purchase will depend upon your state of residency.

APPLICABLE TO NEW YORK RESIDENTS: This advertisement is not an offering. It is a solicitation of interest in the advertised property. No offering of the advertised units can be made and no deposits can be accepted, or reservations, binding or non-binding, can be made until an offering plan is filed with the New York State Department of Law. This advertisement is made pursuant to Cooperative Policy Statement No. 1, issued by the New York State Department of Law, 02/16/04/07, Sponsor 2000 Ocean Drive LLC, 2000 S. Ocean Drive, Hollywood Beach, Florida 33009. Stated square footage and dimensions are warranted to the exterior boundaries of the exterior walls and the centerline of interior partitioning walls and in fact vary from the square footage and dimensions that would be determined by using the description and definition of the "Unit" set forth in the Declaration (which generally only includes the interior spaces between the perimeter walls and excludes all interior structural components and other common elements). The plans, specifications, terms, conditions and statements contained in this brochure are proposed only, and the Developer reserves the right to modify, revise or withdraw any or all of same in its sole discretion and without prior notice. They should not be relied upon as representations, express or implied, of the final detail of the residences. The developer expressly reserves the right to make modifications, revisions, and changes it deems desirable in its sole and absolute discretion. All depictions of landscaping, finishes, appliances, covers, soffits, floor coverings and other matters of detail, including, without limitation, items of finish and decoration, are conceptual only and are not necessarily included in each Unit. Consult your Agreement and the Prospectus for the items included with the Unit. Equal Housing Opportunity.

