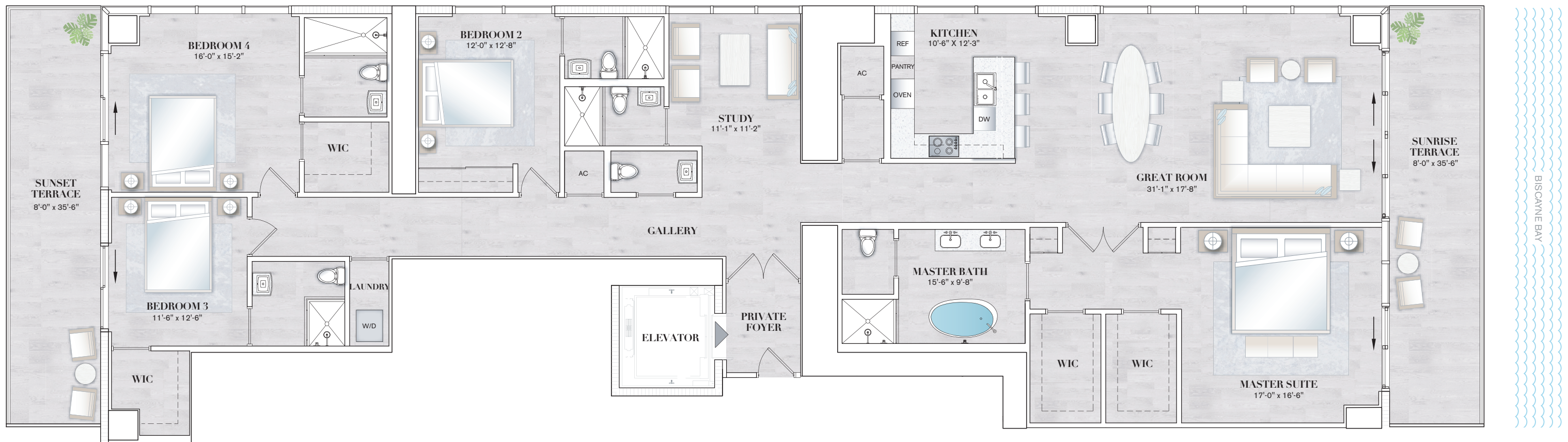


4 BEDROOM + STUDY / 5.5 BATH (CONVERTIBLE TO 5 BEDROOMS)

Interior 3,326 sq. ft. 309 sq. mtrs.
Exterior 567 sq. ft. 53 sq. mtrs.

Total Area 3,893 sq. ft. 362 sq. mtrs.



RESIDENCE FEATURES

- 10' Ceiling Heights
- Two Parking Spaces Per Residence
- High-Speed Private Elevator plus Service Elevator
- Sub-Zero® and Wolf® Stainless Steel Appliances Including Gas Cooktop
- European-Style Italkraft® Cabinetry in Kitchens and Baths with Under Cabinet Lighting
- Waterworks® Designer Plumbing Fixtures
- Full-Size Stackable Washer & Dryer