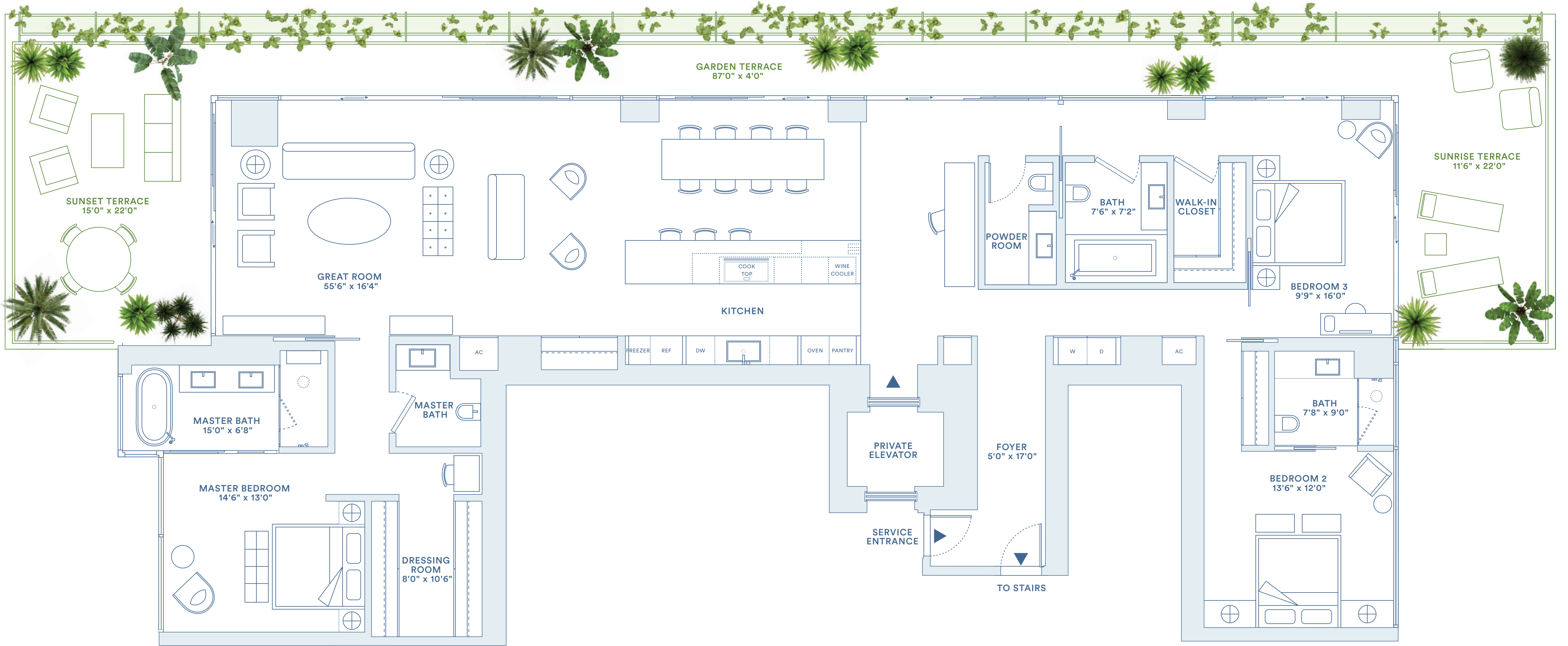


**MONAD  
TERRACE**  
SOUTH BEACH BAY  
BY ATELIERS JEAN NOUVEL



## 6-12B

3 BEDROOMS / 3.5 BATHS  
TOTAL: 3825 SQ FT / 355 SQ M  
INTERIOR: 2691 SQ FT / 250 SQ M  
EXTERIOR: 1134 SQ FT / 105 SQ M

### UNIQUE FEATURES

- /Seamless indoor/outdoor experience
- /Biscayne Bay, Lagoon, and South Beach views
- /Curated climbing garden on North terrace for shade & privacy
- /East, West, and North exposures
- /Light-filled open floor plan
- /Private master suite with lagoon and bay view
- /87' long garden terrace

### ARRIVAL & LANDSCAPE

- /Porte-cochere drop-off
- /Lush landscape from arrival to bay designed by Ateliers Jean Nouvel
- /Central lagoon with sun deck and infinity edge
- /Concierge; 24-hour lobby attendant
- /Sun deck with 116' swimming pool and hot tub overlooking Biscayne Bay
- /Pool service
- /Full service valet parking
- /Juice bar
- /Lagoon fitness and wellness center
- /Residents' lounge
- /Bicycle and water sports storage
- /Monad Terrace bicycles and paddle boards

### FEATURES

- /10' ceilings
- /Custom wood floors throughout
- /Private or semi-private elevator access
- /Marble entry
- /Custom kitchens designed by Jean Nouvel
- /Sculptural cantilevered marble island in Calacatta Gold
- /Fully integrated Gaggenau appliances
- /Custom marble wine rack
- /Integrated wine cooler
- /Custom bathrooms designed by Jean Nouvel
- /Freestanding soaking tub
- /Master baths with Calacatta Gold
- /Secondary baths feature Sugar Gold marble
- /Powder room features Verti Capri stone

monadtterrace.miami

Sales Gallery  
1400 Alton Road Miami Beach FL 33139  
305 695 0888  
info@monadtterrace.miami

Exclusive Marketing & Sales / Douglas Elliman Development  
Marketing

Developer / JDS

ORAL REPRESENTATIONS CANNOT BE RELIED UPON AS CORRECTLY STATING THE REPRESENTATIONS OF THE DEVELOPER. FOR CORRECT REPRESENTATIONS, MAKE REFERENCE TO THIS BROCHURE AND TO THE DOCUMENTS REQUIRED BY SECTION 719.03, FLORIDA STATUTES, TO BE FURNISHED BY A DEVELOPER TO A BUYER OR LESSEE.  
\*Stated square footages and dimensions are measured to the exterior boundaries of the exterior walls and the centerline of interior dividing walls between units and vary from the square footages and dimensions that would be determined using the description and definition of the "Unit" set forth in the Declaration, which generally only include the interior space between the perimeter walls and excludes all interior spaces between the perimeter walls and includes all interior structural components and other common elements. The method of measurement used herein is generally based on sales materials and is provided to allow a prospective buyer to compare the Units with units in other condominium projects that utilize the same method. Square footages are not part of the Unit. Measurements of rooms and built-in floor plan are generally taken at the furthest points of each room to be described above and not at the most exact or perfect footings, without regard for any curbs or variations. Accordingly, the interior or space dimensions of the actual room will be smaller than the product obtained by multiplying the stated length and width. All square footages and dimensions, including (without limitation) estimated ceiling heights, are estimates based on preliminary plans and will vary with actual construction. All floor plans, specifications, images, and other development plans and information depicted or described herein are proposed and conceptual only and will not necessarily accurately reflect the final plans and specifications, and are subject to change without notice and may not be relied upon. No guarantees or representations whatsoever are made regarding existing or future views from the Units or other portions of the Condominium. Options and upgrades reflected or described herein are not included with the unit unless expressly provided in your purchase agreement.  
This offering is made only by the prospectus for the condominium and no statement should be relied upon if not made in the prospectus. This is not intended to be an offer to sell nor a solicitation of offers to buy real estate by residents of NY or in any jurisdiction where prohibited by law. This project is being developed solely by Monad Terrace Property Owner, LLC an affiliate of JDS Development Group) which was recently formed solely for such purpose. Refer to full legal disclosures available at [www.monadtterrace.miami](http://www.monadtterrace.miami).