

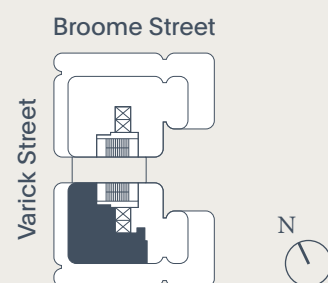
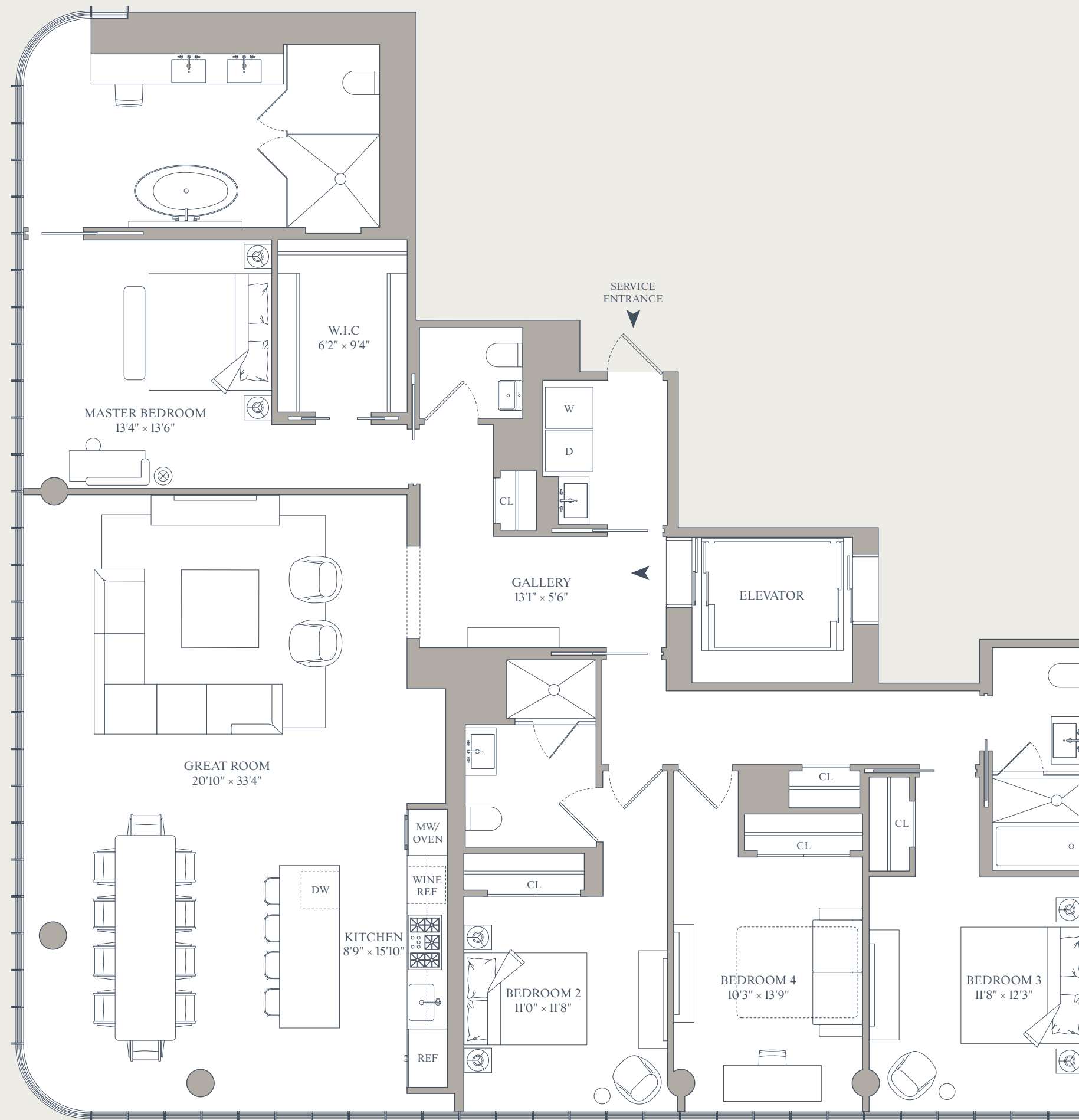
565 Broome SoHo

Residences by
Renzo Piano Building Workshop

Residence
22-24A South

Total Interior
2,519 SF
234 sm

Features
4 Bedrooms
3 Bathrooms
Powder Room
Great Room



Bizzi & Partners
Development



All dimensions are approximate and subject to normal construction variances and tolerances. All images are artists' renderings for illustrative purposes only. Sponsor reserves the right to make substitutions of materials, equipment, fixtures and finishes in accordance with the terms of the Offering Plan. The complete offering terms are in an offering plan available from the sponsor. File no. CD15-0190. Sponsor: Broome Property Owner JV LLC, c/o Bizzi & Partners Development LLC, 55 East 59th Street, 24th Floor, New York, New York 10022. Equal Housing Opportunity.