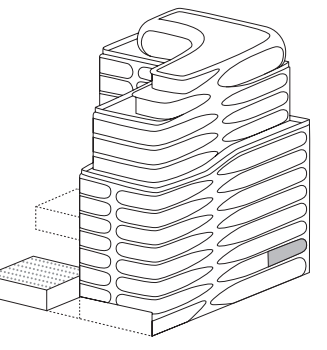


ZAHA HADID

520 WEST 28TH



RESIDENCE 02 LEVEL 3 ELEVATION 16'

Interior: 1,717 Sq. Ft. / 160 Sq. M.

2 Bedrooms
2 Baths
Powder Room

North Exposure
Gracious Entry Foyer
Great Room with Open Kitchen
Signature Zaha Hadid Sculptural Element with Opalescent-Finish Wall Paneling
Master Bedroom Suite with Three Closets
En-Suite Bathroom and Walk-In Closet in Bedroom 2

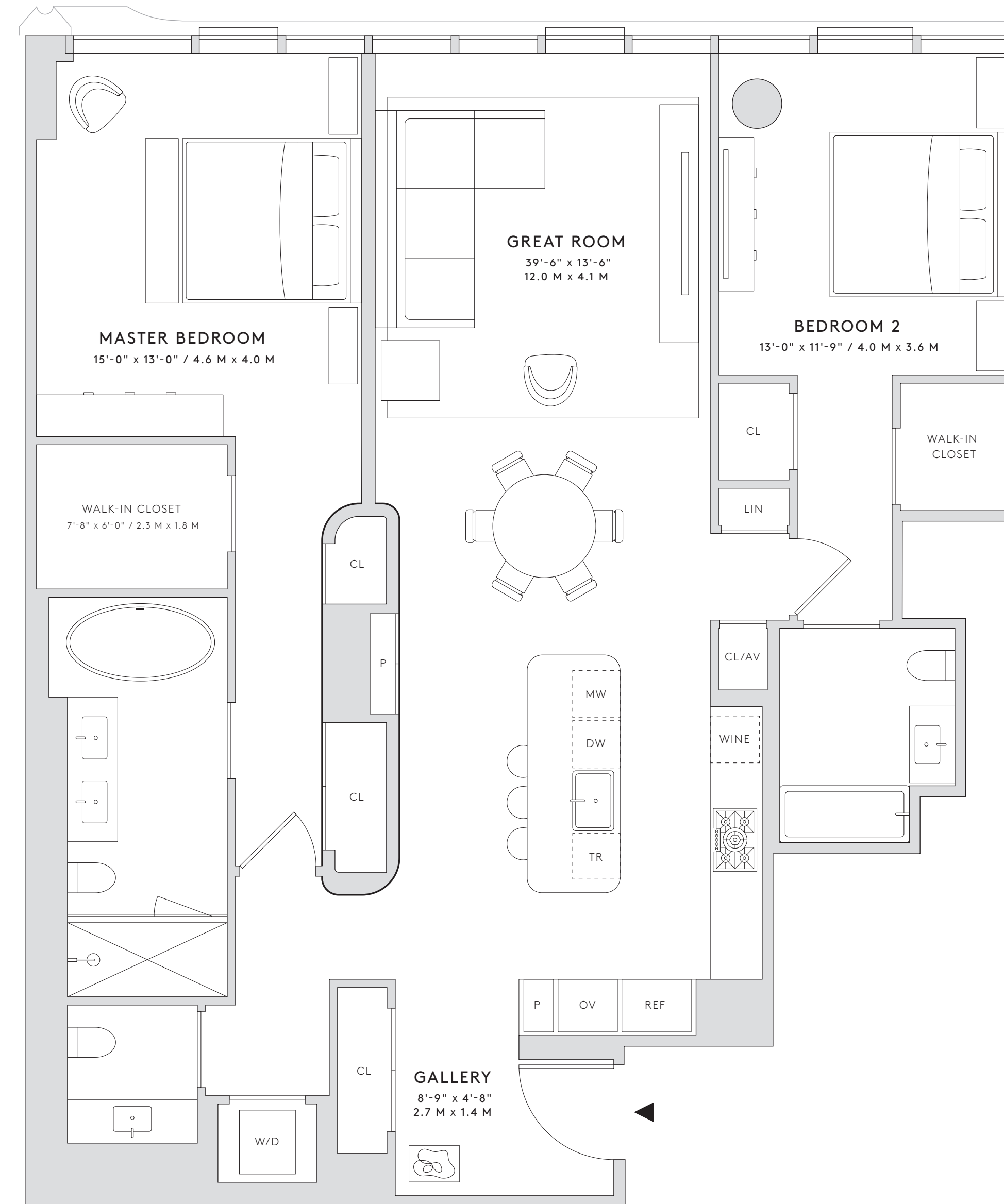
RELATED

EXCLUSIVE MARKETING & SALES AGENTS:

Related Sales &
Corcoran Sunshine Marketing Group

SALES GALLERY

520 West 28th Street
New York, NY 10001
Tel +1 212 502 5528
www.520w28.com



All dimensions are approximate and subject to normal construction variances and tolerances. Plans and dimensions may contain minor variations from floor to floor. The square footage on this floor plan exceeds the usable square footage. THE COMPLETE OFFERING TERMS ARE IN AN OFFERING PLAN AVAILABLE FROM SPONSOR. FILE NO. CD14-0111. Sponsor: 28th Highline Associates, L.L.C., c/o The Related Companies, L.P., 60 Columbus Circle, New York, New York 10023. Property Address: 520 West 28th Street, New York, New York 10001. Sponsor reserves the right to make changes in accordance with the terms of the Offering Plan.

