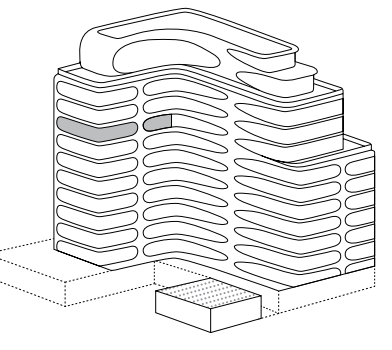


# ZAHA HADID

520 WEST 28TH



## RESIDENCE 33

LEVEL 17 ELEVATION 99'

Interior: 2,927 Sq. Ft. / 272 Sq. M.

Exterior: 198 Sq. Ft. / 18 Sq. M.

3 Bedrooms

3 Baths

Powder Room

South, East & West Exposures

650-square foot (approx.) Great Room with Balcony

Signature Zaha Hadid Sculptural Element with Opalescent-Finish Wall Paneling

Eat-In Kitchen

Family Room

Corner Master Bedroom Suite with Balcony and Walk-In Closet

En-Suite Bathrooms in Bedrooms 2 & 3

Utility Room with Side-by-Side Washer-Dryer and Sink

Dedicated Service Entrance

Floor-to-Ceiling Heights of up to 10'7" (3.2m)

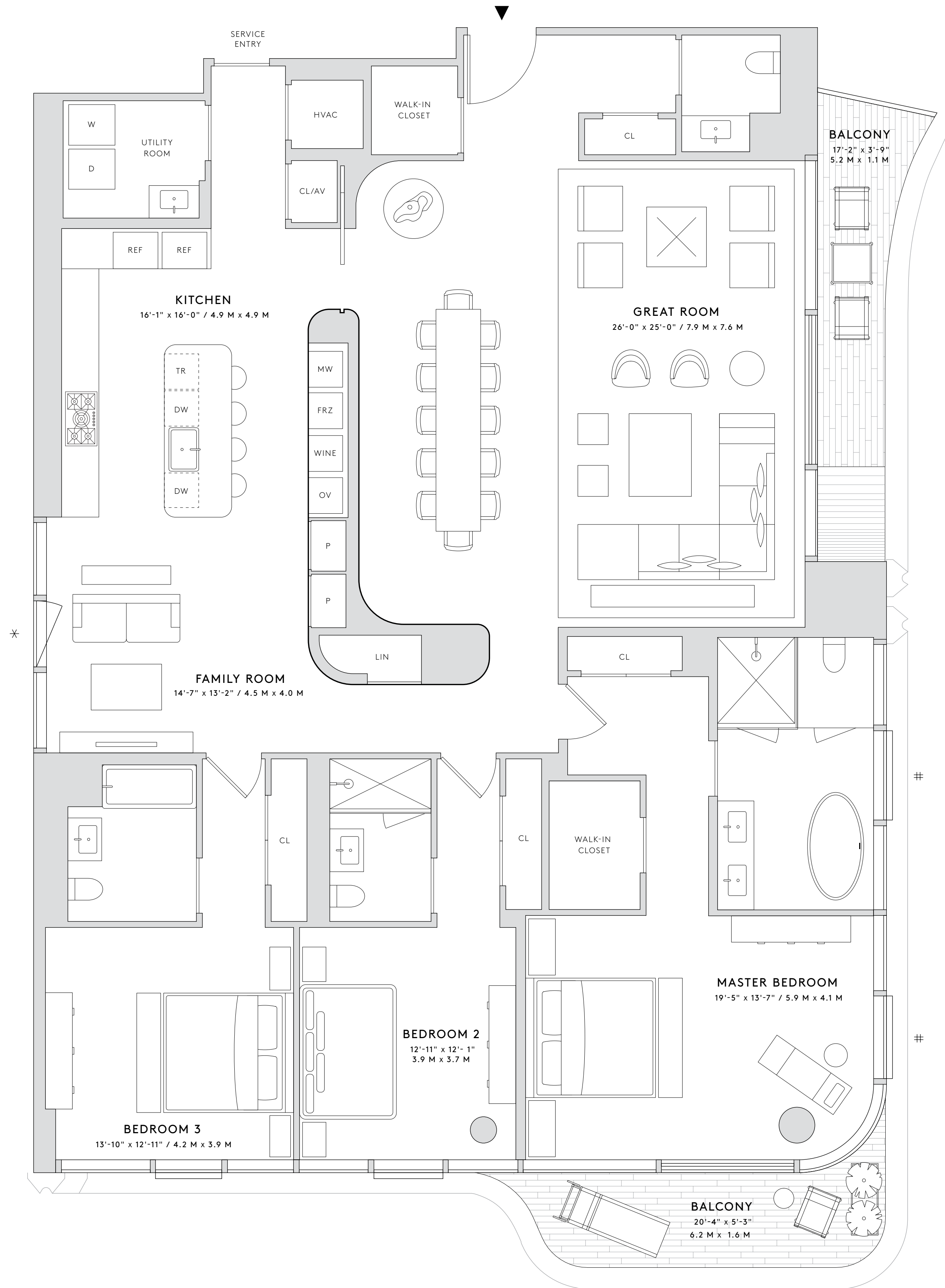
RELATED

EXCLUSIVE MARKETING  
& SALES AGENTS:

Related Sales &  
Corcoran Sunshine Marketing Group

SALES GALLERY

511 West 25<sup>th</sup> St, #801  
New York, NY 10001  
Tel +1 212 502 5528  
www.520w28.com



All dimensions are approximate and subject to normal construction variances and tolerances. Plans and dimensions may contain minor variations from floor to floor. The square footage on this floor plan exceeds the usable square footage. THE COMPLETE OFFERING TERMS ARE IN AN OFFERING PLAN AVAILABLE FROM SPONSOR. FILE NO. CD14-0111. Sponsor: 28th Highline Associates, L.L.C., c/o The Related Companies, L.P., 60 Columbus Circle, New York, New York 10023. Property Address: 520 West 28th Street, New York, New York 10001. Sponsor reserves the right to make changes in accordance with the terms of the Offering Plan.

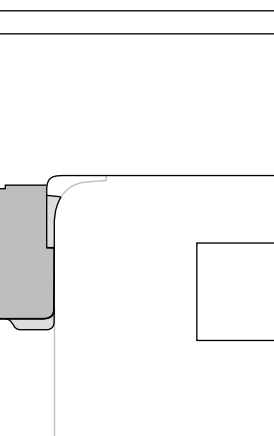
\* Lot Line

# Lot Line with Light and Air Easement



1' 5' 10'

28TH STREET



27TH STREET

HIGH LINE