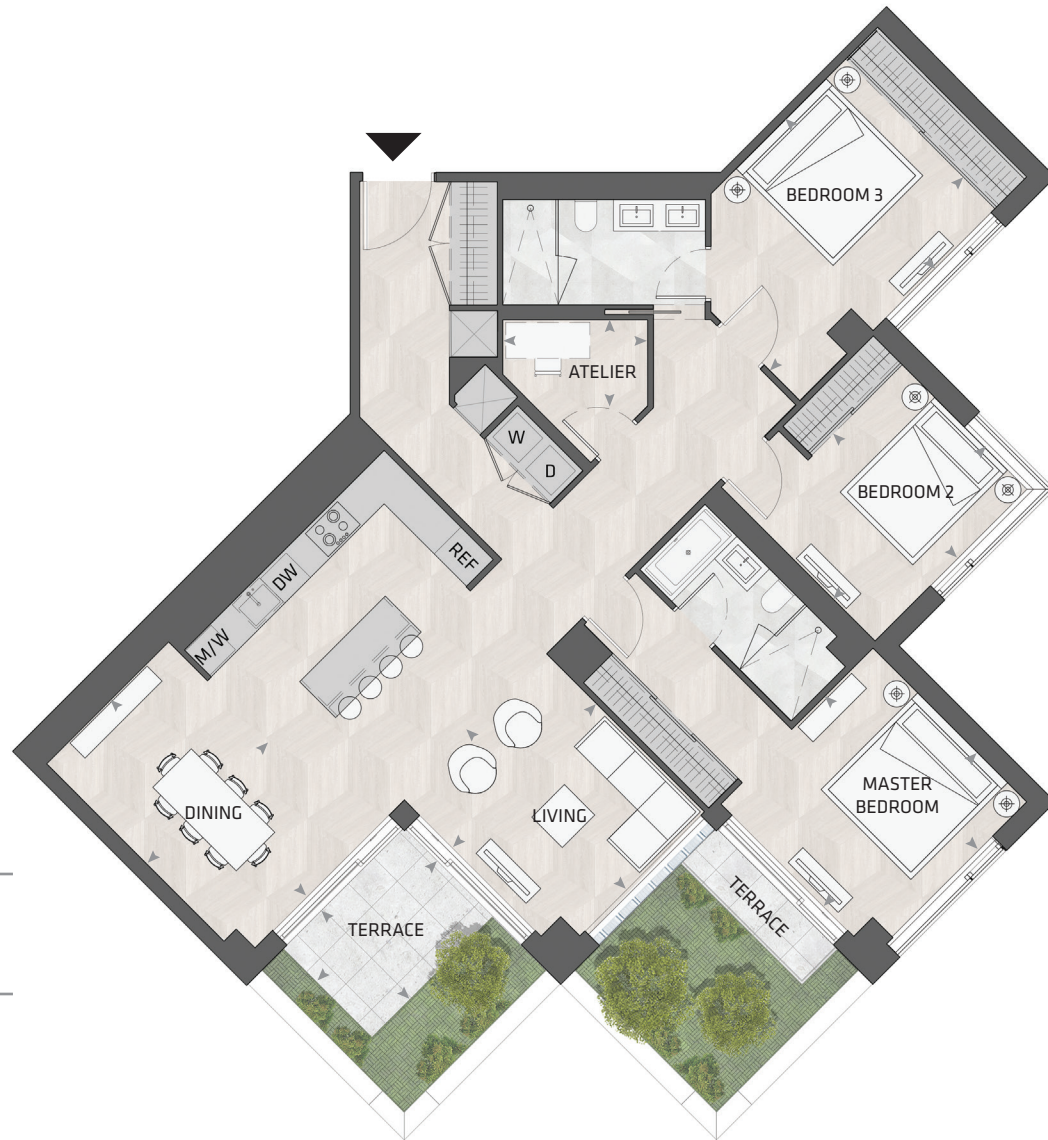


# KING

## HOME 1005 W



3BD.59

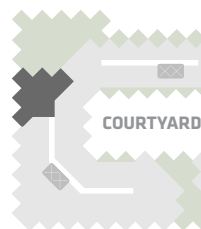
**3 Bedroom + Atelier**  
**2 Bathroom**

**Total Living:**  
**1973 ft<sup>2</sup>**

Interior Living:  
1686 ft<sup>2</sup>

Exterior Living:  
287 ft<sup>2</sup>

<b>LIVING</b>	11' 0" X 11' 11"
<b>DINING</b>	9' 4" X 15' 1"
<b>MASTER BD</b>	11' 9" X 11' 9"
<b>BEDROOM 2</b>	11' 7" X 9' 6"
<b>BEDROOM 3</b>	14' 10" X 11' 5"
<b>ATELIER</b>	7' 10" X 4' 7"
<b>TERRACE</b>	9' 1" X 6' 8"



**WEST MOUNTAIN KEYPLAN**

All dimensions and specifications are approximate. Certain plans are reverse or mirror image. Balcony square footages are estimated and may vary from that stated. Please see Sales Representative for details. Furniture not included. Refer to key plan for unit location and orientation. E. & O.E.