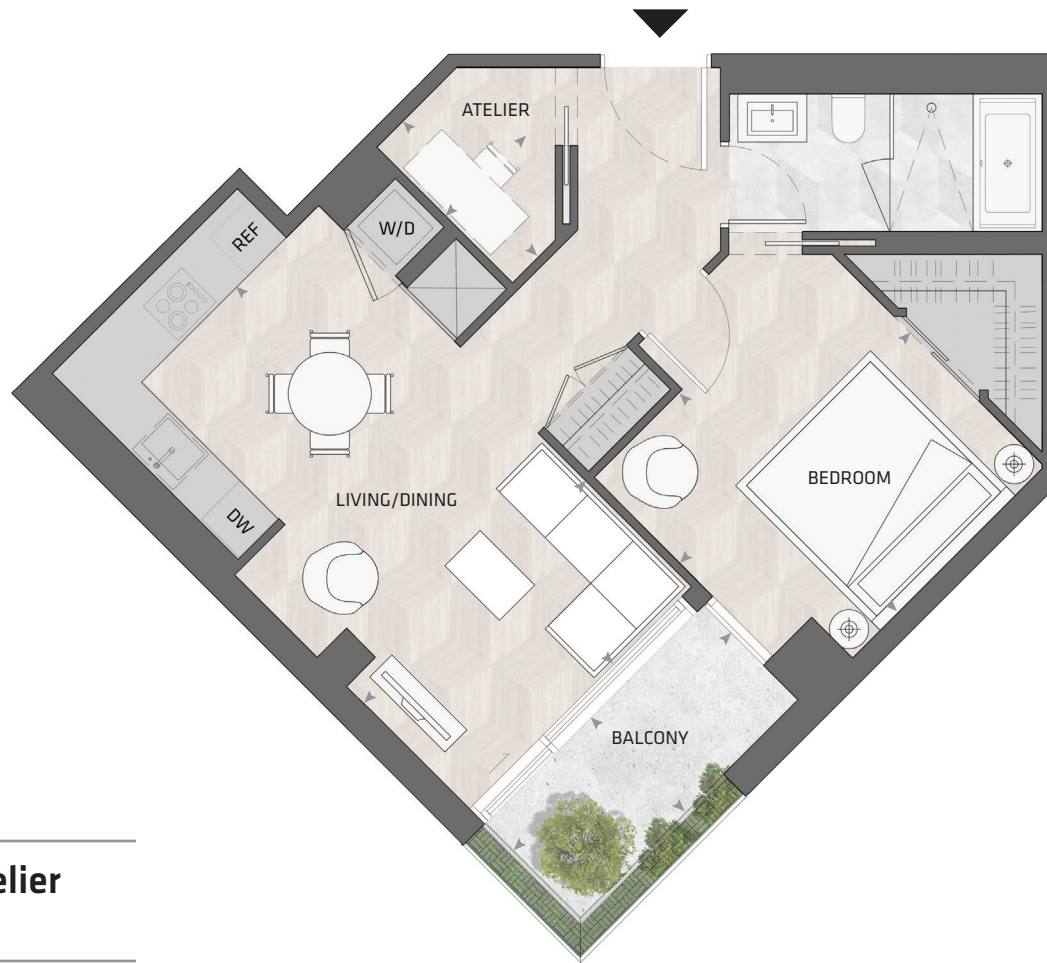


# KING

## HOME 619 W



1BD.59

**1 Bedroom + Atelier**  
**1 Bathroom**

**Total Living:**  
**766 ft<sup>2</sup>**

Interior Living:  
694 ft<sup>2</sup>

Exterior Living:  
72 ft<sup>2</sup>

<b>LIVING/ DINING</b>	10' 8" X 19' 3"
<b>BEDROOM</b>	11' 9" X 11' 2"
<b>ATELIER</b>	4' 0" X 6' 11"
<b>BALCONY</b>	11' 0" X 4' 11"



**WEST MOUNTAIN KEYPLAN**

Custom B&B Furniture Package included with the purchase of studio and one bedroom homes in the West Mountain

All dimensions and specifications are approximate. Certain plans are reverse or mirror image. Balcony square footages are estimated and may vary from that stated. Please see Sales Representative for details. Furniture not included. Refer to key plan for unit location and orientation. E. & O.E.