

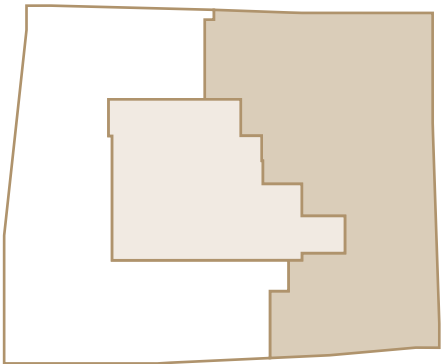
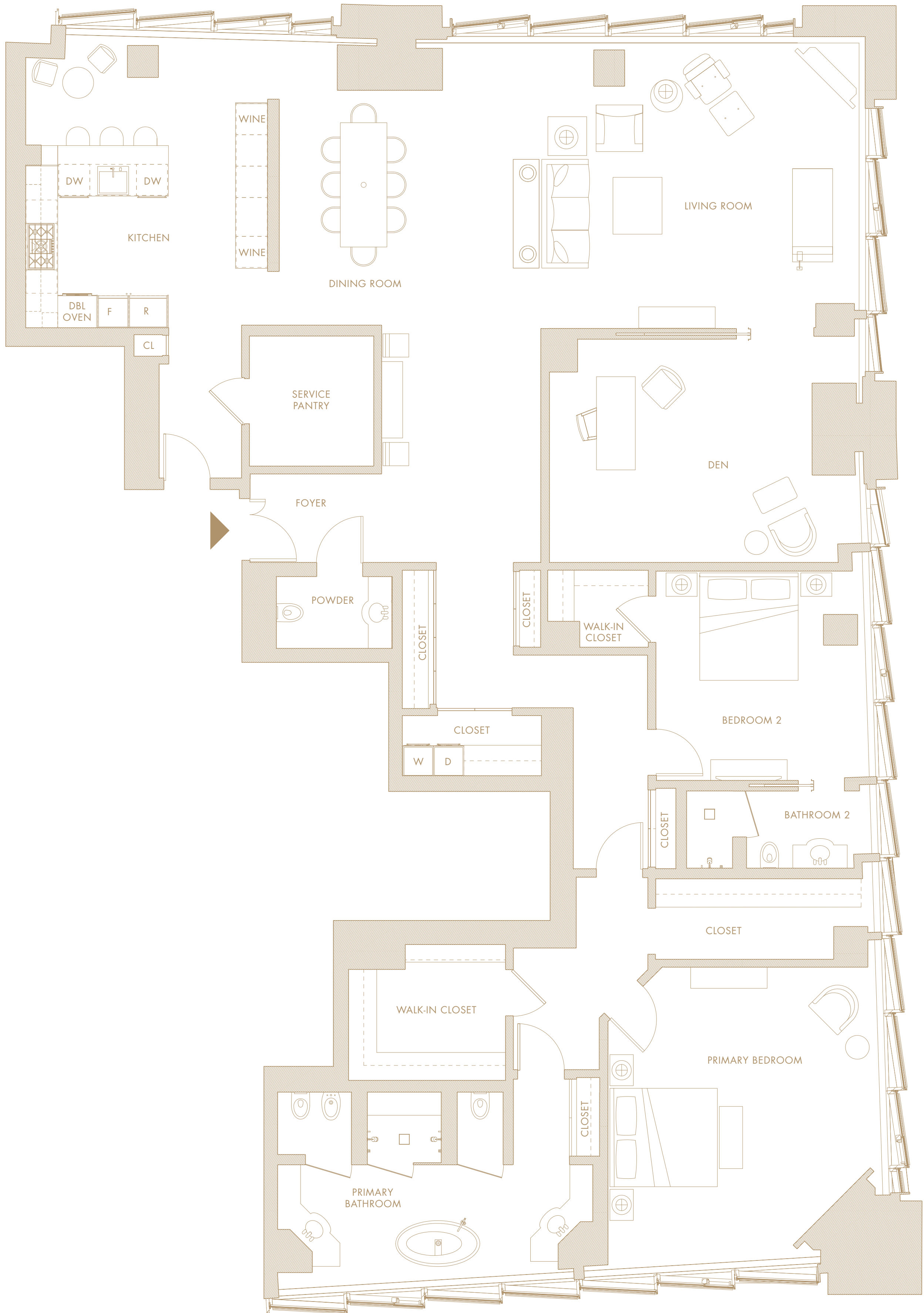
68B

Half-Floor Penthouse

3,256 sq ft

302.5 square meters

- Gracious entry foyer
- Sweeping northeast, southeast, and southwest floor-to-ceiling views
- 9' ceilings in living room and bedrooms
- Living room with corner entertainment cabinet
- Hideaway kitchen with sliding panels, double oven, refrigerator and freezer, dual dishwashers, dual wine storage, breakfast nook, bar with seating, and service pantry
- Primary bedroom with southwest and southeast views and walk-in closet
- Primary bathroom with soaking tub, separate shower, water closet, and dual vanities
- Second bedroom with en-suite bathroom
- Large den with sliding door
- Powder room
- Washer/dryer



FREMONT STREET

HOWARD STREET



181
FREMONT
RESIDENCES

This is not an offer to sell. All material presented herein is intended for informational purposes only & is compiled from sources deemed reliable but has not been verified. The developer reserves the right to make modifications in materials, specifications, plans, pricing, designs, scheduling, & delivery of homes without prior notice. All dimensions & square footages are approximate & may vary from floor to floor. Exclusively represented by Compass Development Marketing Group, a division of Compass. DRE #01527205, #01527235



0' 1' 2' 4' 8'
SCALE: 7/32" = 1'

LEVEL 68

