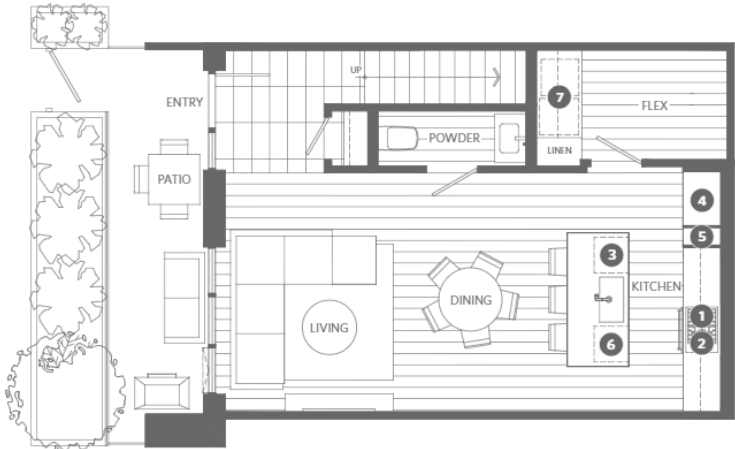


TOWNHOME 2 | 2 BED + 2 BATH + POWDER + FLEX

INTERIOR 1,245 SF  
EXTERIOR 145 SF

THE PACIFIC  
BY GROSVENOR

- 1 30" gas cooktop by Wolf  
30" integrated hood fan by Faber
- 2 24" convection oven by Wolf
- 3 24" microwave by Wolf
- 4 36" integrated refrigerator with freezer drawers by Sub-Zero
- 5 12" full-height pull-out pantry by Snaidero
- 6 24" integrated dishwasher by Miele
- 7 High-efficiency washer and dryer by Miele (side by side)
- 8 Custom closet by Snaidero



MAIN LEVEL



SECOND LEVEL



THE DEVELOPER RESERVES THE RIGHT TO MAKE MODIFICATIONS CONTAINED HEREIN. SIZES, SPECIFICATIONS, LAYOUTS, PLANS, FEATURES, FINISHES AND AVAILABILITY MAY CHANGE WITHOUT NOTICE. E.&O.E.

