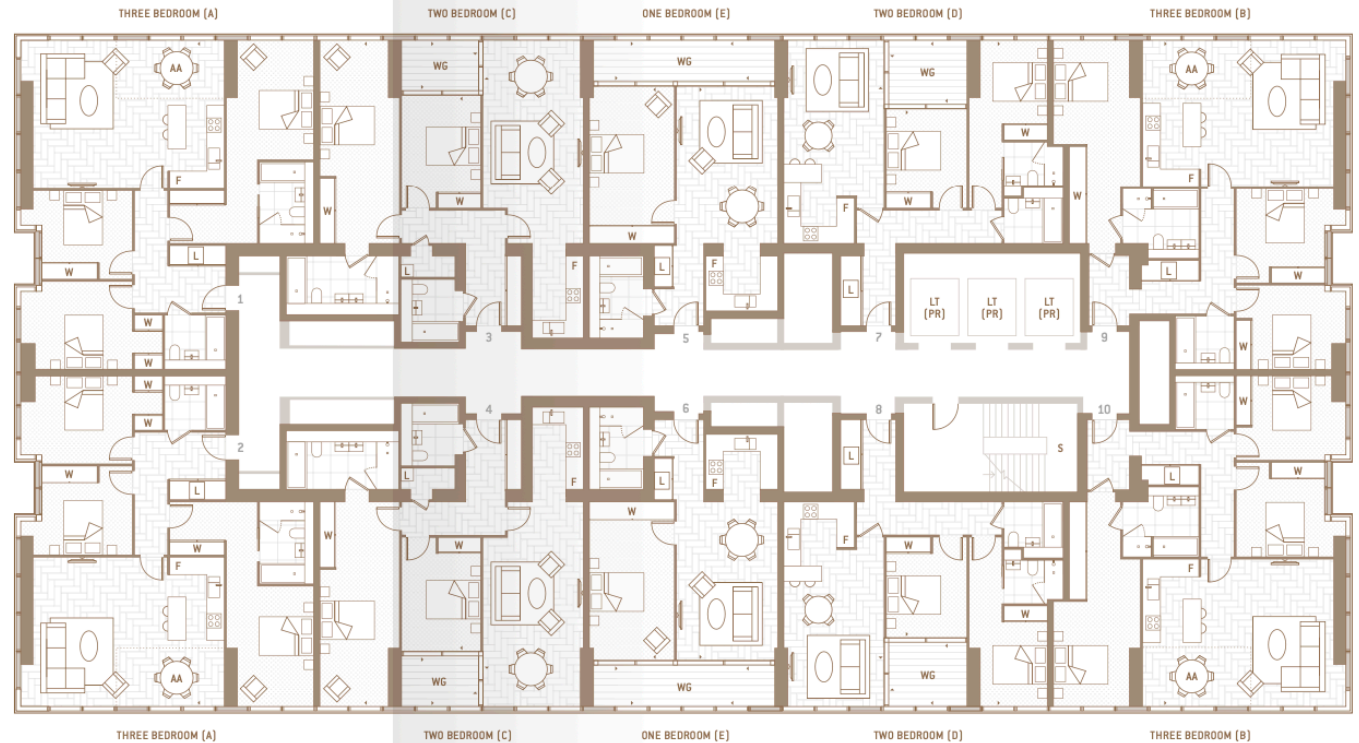
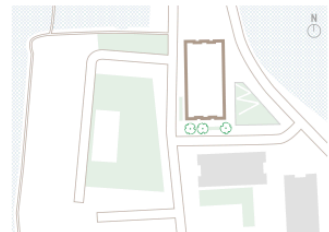


PINNACLE RESIDENCES
LEVELS 65-73

PANORAMA WEST: CITY OF LONDON/RIVER THAMES



PANORAMA EAST: CANARY WHARF/SOUTH DOCK



- AA Amenity Area
- F Fridge
- L Laundry
- LT (PR) Lift (Pinnacle Residences)
- S Stairs
- W Wardrobe
- WG Winter Garden

ONE BEDROOM

Type E
Living Area 7.3 x 5.8 m
Bedroom 1 3.1 x 5.8 m
Internal Area 57.0 sq m / 614 sq ft
Winter Garden 11.0 sq m / 118 sq ft
Total Area 68.0 sq m / 732 sq ft

TWO BEDROOM

Type C	Type D
Living Area 3.7 x 7.6 m	Living Area 3.7 x 7.6 m
Bedroom 1 2.9 x 7.6 m	Bedroom 1 2.9 x 6.3 m
Bedroom 2 2.9 x 3.7 m	Bedroom 2 3.0 x 3.7 m
Internal Area 92.9 sq m / 1000 sq ft	Internal Area 72.0 sq m / 775 sq ft
Winter Garden 7.0 sq m / 75 sq ft	Amenity Area 7.0 sq m / 75 sq ft
Total Area 99.9 sq m / 1075 sq ft	Total Area 79.0 sq m / 850 sq ft

THREE BEDROOM

Type A	Type B	Amenity Area
Living Area 7.0 x 5.5 m	Living Area 7.0 x 5.5 m	8.0 sq m
Bedroom 1 3.2 x 4.5 m	Bedroom 1 3.2 x 7.9 m	86 sq ft
Bedroom 2 4.0 x 3.2 m	Bedroom 2 4.0 x 3.1 m	Total Area 108.8 sq m
Bedroom 3 4.0 x 3.3 m	Bedroom 3 4.0 x 3.5 m	1171 sq ft
Internal Area 100.8 sq m	Internal Area 100.8 sq m	
1085 sq ft	1085 sq ft	

This brochure and the information contained in it does not form part of any contract, and while reasonable effort has been made to ensure accuracy, this cannot be guaranteed and no representation or warranty is made in that regard. Apartment designs and layouts are indicative only and may change. Areas defined as Amenity Area (AA) are subject to planning otherwise they will revert to Winter Gardens (WG). The specification of the apartments is the anticipated specification as at the date this brochure was prepared, but may be subject to change in accordance with permitted variances under the apartment sale contracts. Computer Generated Images and photos are indicative only. All sales remain subject to contract. Fixtures and furnishings including furniture, wall panelling and wall dressings shown in Computer Generated Images and photos are not standard nor included in sales. Please consult your sales contract for information. The property areas are calculated and presented in accordance with the RICS Code of Measuring Practice, 6th edition recommendation. These areas are indicative only of typical floor plans. Property areas of individual apartments/floors may change subject to structural column locations.