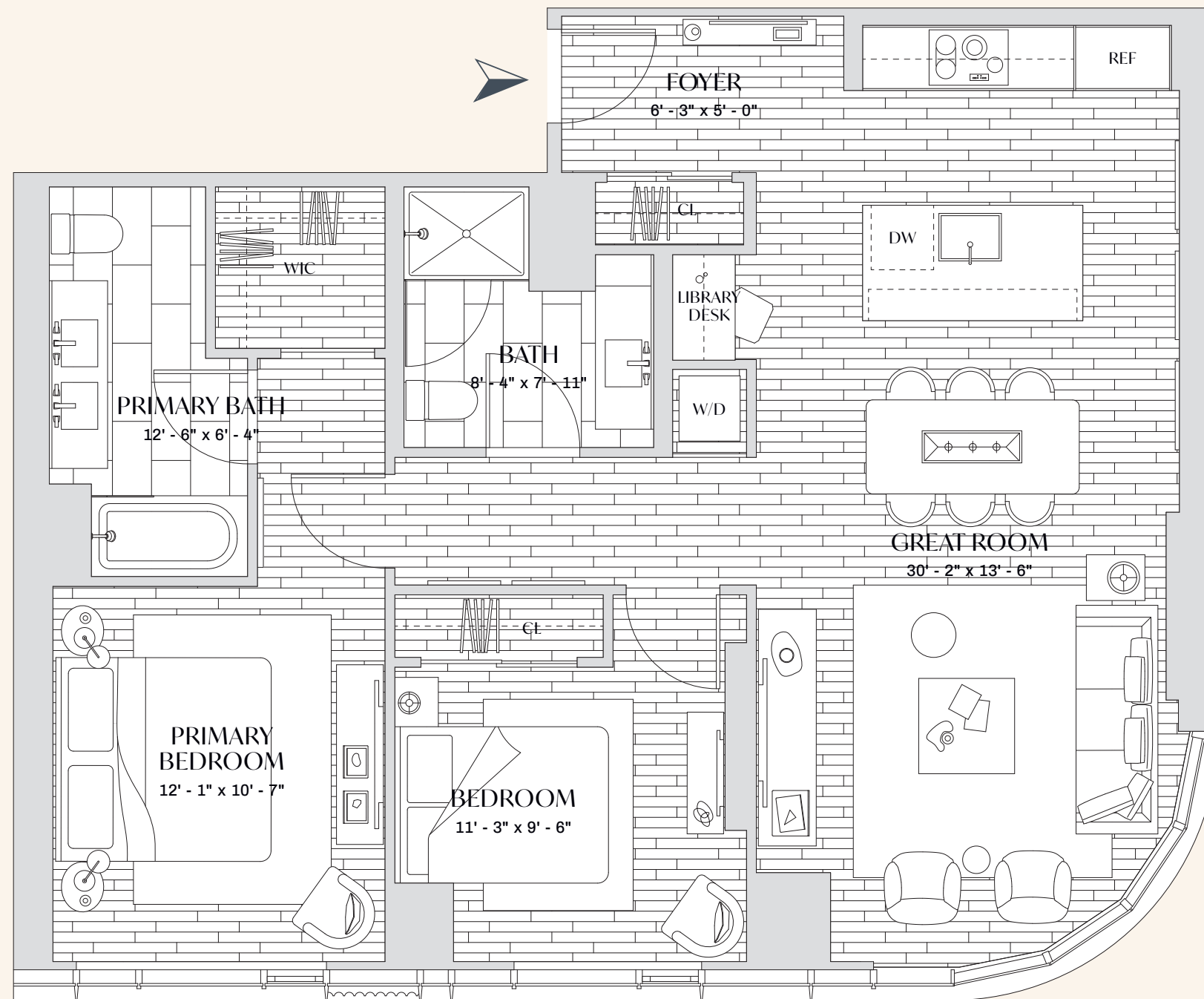
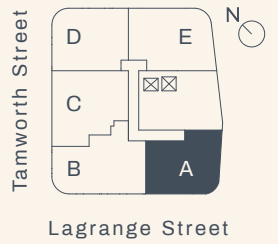


# The PARKER



# A

FLOORS 18-20

**2 BEDROOMS**  
**2 BATHROOMS**  
 1,119 SQFT | 104 SQM

[THEPARKERBOSTON.COM](http://THEPARKERBOSTON.COM)

55 Lagrange Street T 617 423 5555

Plans, dimensions and features shown are approximate and are subject to change without notice or obligation. Variations may occur depending, for example, on construction variances, location of unit and/or mechanical or structural requirements. Equal Housing Opportunity.

**FORTIS**

EXCLUSIVE SALES AND MARKETING  
**DouglasElliman**  
DEVELOPMENT MARKETING