

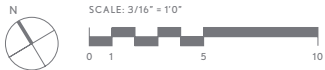
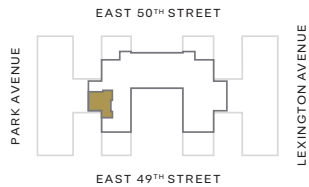
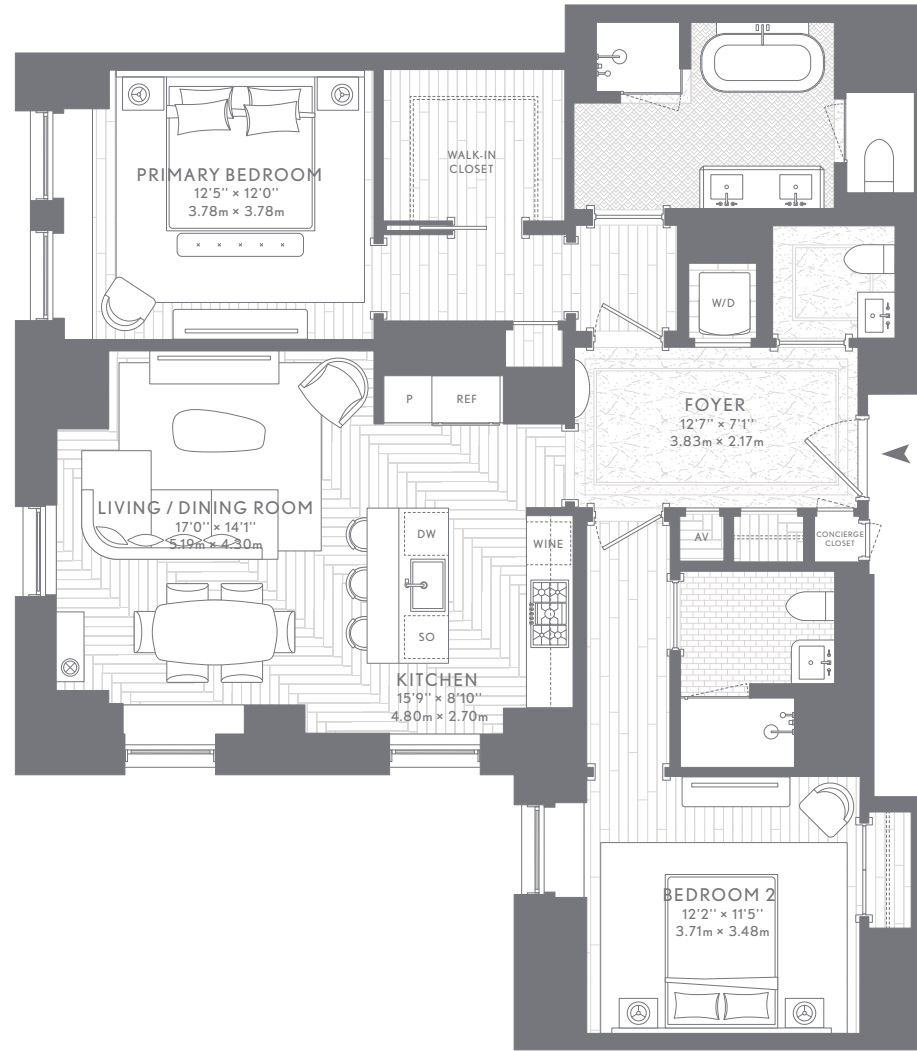


WALDORF ASTORIA
RESIDENCES · NEW YORK

RESIDENCE 2904—3704
2 BEDROOMS | 2 BATHROOMS |
POWDER ROOM

Interior Area:
1,461 Ft² / 135.7 M²

- South and West Exposures
- Gracious Marble Entry Foyer
- Corner Living/Dining Room
- Primary Bedroom Suite with Walk-in Closet
- Dedicated Audio/Visual Technology Closet
- Dedicated Concierge Closet for Secure Delivery Service



T +1 212 872 1200 | WALDORFASTORIARESIDENCESNY.COM | INFO@WALDORFASTORIARESIDENCESNY.COM

Waldorf Astoria is a registered trademark of Hilton International Holding LLC, an affiliate of Hilton Worldwide Holdings Inc. (together with its affiliates, "Hilton"). The residences are not owned, developed, or sold by Hilton and Hilton does not make any representations, warranties or guarantees whatsoever with respect to the residences. The developer uses the Waldorf Astoria brand name and certain Waldorf Astoria trademarks (the "Trademarks") under a limited, non-exclusive, non-transferable license from Hilton. The license may be terminated or may expire without renewal, in which case the residences described herein will not be identified as a Waldorf Astoria branded project or have any rights to use the Trademarks. This floor plan is based on construction drawings and is subject to normal construction variances and tolerances. The square footage on this floor plan exceeds the useable floor area. Minor inaccuracies in layout and room dimensions as shown on this floor plan will not excuse a purchaser from completing the purchase of a unit without abatement in price or recourse against sponsor. Sponsor reserves the right to make changes to the unit in accordance with the offering plan. The complete offering terms are in an offering plan available from sponsor (AB Stable LLC). File no. CD18-0101. Equal Housing Opportunity.

EXCLUSIVE MARKETING AND SALES
Douglas Elliman
Development Marketing